

**MODEL: EDW-02-24-HEX**

# Resilient computing, anywhere IT matters.

Our Edge Nodes redefine micro data centers, built to withstand the elements with their compact and robust design. Simple to install, these steel-structured nodes house advanced cooling systems and optional UPS for enduring performance. Safety and security features enhance their resilience. Ideal for outdoor, space-limited areas, they provide a powerful solution for remote computing needs. True to the Edge Computing movement, our Edge Nodes harness distributed computing, ensuring efficient and accessible operations anywhere.



## FEATURES & BENEFITS

### All-in-One System

Experience the epitome of 'All-in-One' design with our Edge Nodes: a fully integrated and pre-engineered marvel, featuring packaged precision cooling, secure cabinet design, and comprehensive access control and monitoring systems. Optional enhancements include UPS, 48VDC, battery, and power distribution modules.

### Wall Mount Precision Cooling System

Experience ultimate efficiency with our Edge Nodes' wall-mounted precision cooling unit. Specially designed for outdoor use, it ensures optimal cooling for your IT equipment under any weather conditions, keeping them at peak performance.

### Built-in Monitoring System

Enjoy peace of mind with our Edge Nodes' integrated monitoring systems, designed for seamless remote oversight. Effortlessly view, manage, and receive alerts about each unit's operational status, no matter where it's deployed.

### Rack Mount Power Distribution Module

Opt for enhanced control with our optional rack-mounted power distribution module. Seamlessly integrated, it provides comprehensive power line protection and management, surge protection, and precise power metering for your Edge Nodes.

### Lithium Battery Backup

Choose our optional Lithium battery for extended lifetime operation, perfectly adapted to withstand high ambient environments.

### Security and Fire Protection

Enhance your Edge Nodes' safety and oversight with our optional add-ons: a comprehensive video monitoring system for visual insights and a robust fire extinguishing system for added protection, ensuring seamless operation in any environment.

## TECHNICAL DATA

**Available IT Space**  
22U

**Height -mm**  
1597

**Redundancy**  
N

**Cabinet Weight -kg**  
160

**Width -mm**  
905

**IP Level**  
IP55

**Depth -mm**  
1097

## POWER SECTION

**UPS -kVA**  
2kVA (Optional)

**Backup Time - min**  
5 minutes (nominal)

**UPS Type**  
Rack mount high frequency online type

**PDU**  
2x Basic Type 8 sockets

**Battery**  
VRLA (Lithium Optional)

**48VDC Power**  
-

## COOLING SECTION

**Cooling Type**  
Package DX

**Mount Type**  
Door

**Capacity -kW**  
1.5

## DCIM SECTION

**Remote Web**  
Yes

**Temperature & Humidity**  
1 at cold aisle

**UPS Mgmt.**  
Yes

**Cooling Mgmt.**  
Yes

**Smoke Sensor**  
Yes

**Leaking Sensor**  
Yes

**Door Status**  
Front/  
Rear door sensors

**MODEL: EDW-02-42-HEX**

# Resilient computing, anywhere IT matters.

Our Edge Nodes redefine micro data centers, built to withstand the elements with their compact and robust design. Simple to install, these steel-structured nodes house advanced cooling systems and optional UPS for enduring performance. Safety and security features enhance their resilience. Ideal for outdoor, space-limited areas, they provide a powerful solution for remote computing needs. True to the Edge Computing movement, our Edge Nodes harness distributed computing, ensuring efficient and accessible operations anywhere.



## FEATURES & BENEFITS

### All-in-One System

Experience the epitome of 'All-in-One' design with our Edge Nodes: a fully integrated and pre-engineered marvel, featuring packaged precision cooling, secure cabinet design, and comprehensive access control and monitoring systems. Optional enhancements include UPS, 48VDC, battery, and power distribution modules.

### Wall Mount Precision Cooling System

Experience ultimate efficiency with our Edge Nodes' wall-mounted precision cooling unit. Specially designed for outdoor use, it ensures optimal cooling for your IT equipment under any weather conditions, keeping them at peak performance.

### Built-in Monitoring System

Enjoy peace of mind with our Edge Nodes' integrated monitoring systems, designed for seamless remote oversight. Effortlessly view, manage, and receive alerts about each unit's operational status, no matter where it's deployed.

### Rack Mount Power Distribution Module

Opt for enhanced control with our optional rack-mounted power distribution module. Seamlessly integrated, it provides comprehensive power line protection and management, surge protection, and precise power metering for your Edge Nodes.

### Lithium Battery Backup

Choose our optional Lithium battery for extended lifetime operation, perfectly adapted to withstand high ambient environments.

### Security and Fire Protection

Enhance your Edge Nodes' safety and oversight with our optional add-ons: a comprehensive video monitoring system for visual insights and a robust fire extinguishing system for added protection, ensuring seamless operation in any environment.

#### TECHNICAL DATA

<b>Available IT Space</b> 40U	<b>Height -mm</b> 2105
<b>Redundancy</b> N	<b>Cabinet Weight -kg</b> 230
<b>Width -mm</b> 905	<b>IP Level</b> IP55
<b>Depth -mm</b> 1097	

#### POWER SECTION

<b>UPS -kVA</b> 2kVA (Optional)	<b>Backup Time - min</b> 5 minutes (nominal)
<b>UPS Type</b> Rack mount high frequency online type	<b>PDU</b> 2x Basic Type 8 sockets
<b>Battery</b> VRLA (Lithium Optional)	<b>48VDC Power</b> -

#### COOLING SECTION

<b>Cooling Type</b> Package DX
<b>Mount Type</b> Door
<b>Capacity -kW</b> 1.5

#### DCIM SECTION

<b>Remote Web</b> Yes
<b>Temperature &amp; Humidity</b> 1 at cold aisle

<b>UPS Mgmt.</b> Yes
<b>Cooling Mgmt.</b> Yes

<b>Smoke Sensor</b> Yes
<b>Leaking Sensor</b> Yes

<b>Door Status</b> Front/ Rear door sensors
---

**MODEL: EDW-06**

# Resilient computing, anywhere IT matters.

Our Edge Nodes redefine micro data centers, built to withstand the elements with their compact and robust design. Simple to install, these steel-structured nodes house advanced cooling systems and optional UPS for enduring performance. Safety and security features enhance their resilience. Ideal for outdoor, space-limited areas, they provide a powerful solution for remote computing needs. True to the Edge Computing movement, our Edge Nodes harness distributed computing, ensuring efficient and accessible operations anywhere.



## FEATURES & BENEFITS

### All-in-One System

Experience the epitome of 'All-in-One' design with our Edge Nodes: a fully integrated and pre-engineered marvel, featuring packaged precision cooling, secure cabinet design, and comprehensive access control and monitoring systems. Optional enhancements include UPS, 48VDC, battery, and power distribution modules.

### In-Rack Cooling System

Experience optimal efficiency with our in-rack cooling solutions. Designed for a minimal footprint, these units seamlessly integrate into standard server racks. They maintain an ideal temperature for your Edge Nodes, ensuring the longevity of your equipment and consistent high performance, even in challenging outdoor environments.

### Built-in Monitoring System

Enjoy peace of mind with our Edge Nodes' integrated monitoring systems, designed for seamless remote oversight. Effortlessly view, manage, and receive alerts about each unit's operational status, no matter where it's deployed.

### Rack Mount Power Distribution Module

Opt for enhanced control with our optional rack-mounted power distribution module. Seamlessly integrated, it provides comprehensive power line protection and management, surge protection, and precise power metering for your Edge Nodes.

### Lithium Battery Backup

Choose our optional Lithium battery for extended lifetime operation, perfectly adapted to withstand high ambient environments.

### Security and Fire Protection

Enhance your Edge Nodes' safety and oversight with our optional add-ons: a comprehensive video monitoring system for visual insights and a robust fire extinguishing system for added protection, ensuring seamless operation in any environment.

## TECHNICAL DATA

**Available IT Space**  
27U

**Height -mm**  
2300

**Redundancy**  
N

**Cabinet Weight -kg**  
560

**Width -mm**  
1400

**IP Level**  
IP55

**Depth -mm**  
1600

## POWER SECTION

**UPS -kVA**  
6kVA

**Backup Time - min**  
5 minutes (nominal)

**UPS Type**  
Rack mount high frequency online type

**PDU**  
2x Basic Type 8 sockets

**Battery**  
VRLA (Lithium Optional)

**48VDC Power**  
Optional

## COOLING SECTION

**Cooling Type**  
Split DX

**Mount Type**  
Rack

**Capacity -kW**  
3.9

## DCIM SECTION

**Remote Web**  
Yes

**Temperature & Humidity**  
1 at cold aisle

**UPS Mgmt.**  
Yes

**Cooling Mgmt.**  
Yes

**Smoke Sensor**  
Yes

**Leaking Sensor**  
Yes

**Door Status**  
Front/  
Rear door sensors

**MODEL: EDW-10**

# Resilient computing, anywhere IT matters.

Our Edge Nodes redefine micro data centers, built to withstand the elements with their compact and robust design. Simple to install, these steel-structured nodes house advanced cooling systems and optional UPS for enduring performance. Safety and security features enhance their resilience. Ideal for outdoor, space-limited areas, they provide a powerful solution for remote computing needs. True to the Edge Computing movement, our Edge Nodes harness distributed computing, ensuring efficient and accessible operations anywhere.



## FEATURES & BENEFITS

### All-in-One System

Experience the epitome of 'All-in-One' design with our Edge Nodes: a fully integrated and pre-engineered marvel, featuring packaged precision cooling, secure cabinet design, and comprehensive access control and monitoring systems. Optional enhancements include UPS, 48VDC, battery, and power distribution modules.

### In-Rack Cooling System

Experience optimal efficiency with our in-rack cooling solutions. Designed for a minimal footprint, these units seamlessly integrate into standard server racks. They maintain an ideal temperature for your Edge Nodes, ensuring the longevity of your equipment and consistent high performance, even in challenging outdoor environments.

### Built-in Monitoring System

Enjoy peace of mind with our Edge Nodes' integrated monitoring systems, designed for seamless remote oversight. Effortlessly view, manage, and receive alerts about each unit's operational status, no matter where it's deployed.

### Rack Mount Power Distribution Module

Opt for enhanced control with our optional rack-mounted power distribution module. Seamlessly integrated, it provides comprehensive power line protection and management, surge protection, and precise power metering for your Edge Nodes.

### Lithium Battery Backup

Choose our optional Lithium battery for extended lifetime operation, perfectly adapted to withstand high ambient environments.

### Security and Fire Protection

Enhance your Edge Nodes' safety and oversight with our optional add-ons: a comprehensive video monitoring system for visual insights and a robust fire extinguishing system for added protection, ensuring seamless operation in any environment.

#### TECHNICAL DATA

**Available IT Space**  
67U

**Height -mm**  
2300

**Redundancy**  
N

**Cabinet Weight -kg**  
900

**Width -mm**  
2000

**IP Level**  
IP55

**Depth -mm**  
1600

#### POWER SECTION

**UPS -kVA**  
10kVA

**Backup Time - min**  
5 minutes (nominal)

**UPS Type**  
Rack mount high frequency online type

**PDU**  
2x Basic Type 8 sockets

**Battery**  
VRLA (Lithium Optional)

**48VDC Power**  
Optional

#### COOLING SECTION

**Cooling Type**  
Split DX

**Mount Type**  
Rack

**Capacity -kW**  
5

#### DCIM SECTION

**Remote Web**  
Yes

**Temperature & Humidity**  
1 at cold aisle

**UPS Mgmt.**  
Yes

**Cooling Mgmt.**  
Yes

**Smoke Sensor**  
Yes

**Leaking Sensor**  
Yes

**Door Status**  
Front/  
Rear door sensors

**MODEL: EDW-10-IR**

# Resilient computing, anywhere IT matters.

Our Edge Nodes redefine micro data centers, built to withstand the elements with their compact and robust design. Simple to install, these steel-structured nodes house advanced cooling systems and optional UPS for enduring performance. Safety and security features enhance their resilience. Ideal for outdoor, space-limited areas, they provide a powerful solution for remote computing needs. True to the Edge Computing movement, our Edge Nodes harness distributed computing, ensuring efficient and accessible operations anywhere.



## FEATURES & BENEFITS

### All-in-One System

Experience the epitome of 'All-in-One' design with our Edge Nodes: a fully integrated and pre-engineered marvel, featuring packaged precision cooling, secure cabinet design, and comprehensive access control and monitoring systems. Optional enhancements include UPS, 48VDC, battery, and power distribution modules.

### In-Rack Cooling System

Experience optimal efficiency with our in-rack cooling solutions. Designed for a minimal footprint, these units seamlessly integrate into standard server racks. They maintain an ideal temperature for your Edge Nodes, ensuring the longevity of your equipment and consistent high performance, even in challenging outdoor environments.

### Built-in Monitoring System

Enjoy peace of mind with our Edge Nodes' integrated monitoring systems, designed for seamless remote oversight. Effortlessly view, manage, and receive alerts about each unit's operational status, no matter where it's deployed.

### Rack Mount Power Distribution Module

Opt for enhanced control with our optional rack-mounted power distribution module. Seamlessly integrated, it provides comprehensive power line protection and management, surge protection, and precise power metering for your Edge Nodes.

### Lithium Battery Backup

Choose our optional Lithium battery for extended lifetime operation, perfectly adapted to withstand high ambient environments.

### Security and Fire Protection

Enhance your Edge Nodes' safety and oversight with our optional add-ons: a comprehensive video monitoring system for visual insights and a robust fire extinguishing system for added protection, ensuring seamless operation in any environment.

## TECHNICAL DATA

**Available IT Space**  
73U

**Height -mm**  
2300

**Redundancy**  
N

**Cabinet Weight -kg**  
1160

**Width -mm**  
2600

**IP Level**  
IP55

**Depth -mm**  
1600

## POWER SECTION

**UPS -kVA**  
10kVA

**Backup Time - min**  
5 minutes (nominal)

**UPS Type**  
Rack mount high frequency online type

**PDU**  
2x Basic Type 8 sockets

**Battery**  
VRLA (Lithium Optional)

**48VDC Power**  
Optional

## COOLING SECTION

**Cooling Type**  
Split DX

**Mount Type**  
Row

**Capacity -kW**  
5.6

## DCIM SECTION

**Remote Web**  
Yes

**Temperature & Humidity**  
1 at cold aisle

**UPS Mgmt.**  
Yes

**Cooling Mgmt.**  
Yes

**Smoke Sensor**  
Yes

**Leaking Sensor**  
Yes

**Door Status**  
Front/  
Rear door sensors

**MODEL: EDW-20**

# Resilient computing, anywhere IT matters.

Our Edge Nodes redefine micro data centers, built to withstand the elements with their compact and robust design. Simple to install, these steel-structured nodes house advanced cooling systems and optional UPS for enduring performance. Safety and security features enhance their resilience. Ideal for outdoor, space-limited areas, they provide a powerful solution for remote computing needs. True to the Edge Computing movement, our Edge Nodes harness distributed computing, ensuring efficient and accessible operations anywhere.



## FEATURES & BENEFITS

### All-in-One System

Experience the epitome of 'All-in-One' design with our Edge Nodes: a fully integrated and pre-engineered marvel, featuring packaged precision cooling, secure cabinet design, and comprehensive access control and monitoring systems. Optional enhancements include UPS, 48VDC, battery, and power distribution modules.

### In-Rack Cooling System

Experience optimal efficiency with our in-rack cooling solutions. Designed for a minimal footprint, these units seamlessly integrate into standard server racks. They maintain an ideal temperature for your Edge Nodes, ensuring the longevity of your equipment and consistent high performance, even in challenging outdoor environments.

### Built-in Monitoring System

Enjoy peace of mind with our Edge Nodes' integrated monitoring systems, designed for seamless remote oversight. Effortlessly view, manage, and receive alerts about each unit's operational status, no matter where it's deployed.

### Rack Mount Power Distribution Module

Opt for enhanced control with our optional rack-mounted power distribution module. Seamlessly integrated, it provides comprehensive power line protection and management, surge protection, and precise power metering for your Edge Nodes.

### Lithium Battery Backup

Choose our optional Lithium battery for extended lifetime operation, perfectly adapted to withstand high ambient environments.

### Security and Fire Protection

Enhance your Edge Nodes' safety and oversight with our optional add-ons: a comprehensive video monitoring system for visual insights and a robust fire extinguishing system for added protection, ensuring seamless operation in any environment.

## TECHNICAL DATA

**Available IT Space**  
 101U

**Height -mm**  
 2300

**Redundancy**  
 N

**Cabinet Weight -kg**  
 1242

**Width -mm**  
 2600

**IP Level**  
 IP55

**Depth -mm**  
 1600

## POWER SECTION

**UPS -kVA**  
 20kVA

**Backup Time - min**  
 5 minutes (nominal)

**UPS Type**  
 Rack mount high frequency online type

**PDU**  
 2x Basic Type 8 sockets

**Battery**  
 VRLA (Lithium Optional)

**48VDC Power**  
 Optional

## COOLING SECTION

**Cooling Type**  
 Split DX

**Mount Type**  
 Rack

**Capacity -kW**  
 12

## DCIM SECTION

**Remote Web**  
 Yes

**Temperature & Humidity**  
 1 at cold aisle

**UPS Mgmt.**  
 Yes

**Cooling Mgmt.**  
 Yes

**Smoke Sensor**  
 Yes

**Leaking Sensor**  
 Yes

**Door Status**  
 Front/  
 Rear door sensors

# Built-in Monitoring System

Enjoy peace of mind with our Edge Nodes' integrated monitoring systems, designed for seamless remote oversight. Effortlessly view, manage, and receive alerts about each unit's operational status, no matter where it's deployed.

Empower your operations with our Edge Nodes, engineered with advanced remote monitoring capabilities. With detailed telemetry such as UPS battery load, power and cooling operations, temperature, event alarms, and more, you'll have unparalleled insight into each node.

## Powerful, Seamless, Effortless.

### Powerful

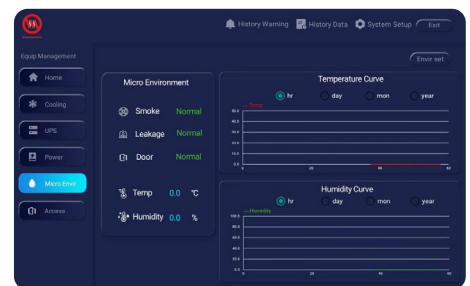
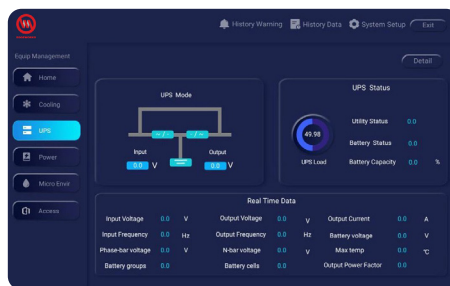
A strong built-in monitoring system that gives you **complete control** over each unit's status.

### Seamless

The monitoring system **integrates** into remote management, providing **smooth oversight** and **real-time performance updates**.

### Effortless

Managing and monitoring process is a breeze with the integrated system, allowing **easy control** and **instant alerts**.



## Complete control.

With the **ability to manage control parameters**, access real-time data on equipment, and oversee user access management puts you firmly in control. This comprehensive oversight eclipses manual, standalone systems, allowing you to optimize performance, preempt issues, and ensure seamless operation, no matter the location of your nodes.

Our Edge Nodes also offer **user management capabilities**, allowing you to **easily control and grant access** to authorized individuals, ensuring secure and efficient management of the units. With our Edge Nodes, you're not just staying connected – you're staying a step ahead.

