



Data Center Infrastructure Monitoring

Control, manage, and debug your micro modular data center in **a better way.**

Managing Your Critical Data Center Facility Assets
Every-where, Every-minute.

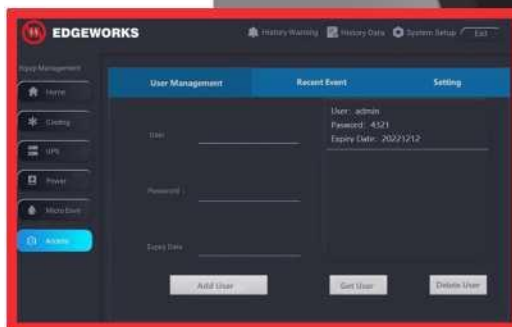
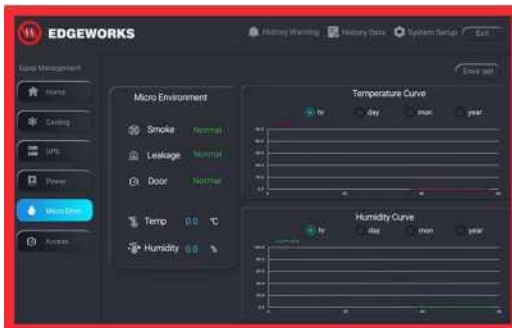


EDGEWORKS

Edge Monitoring



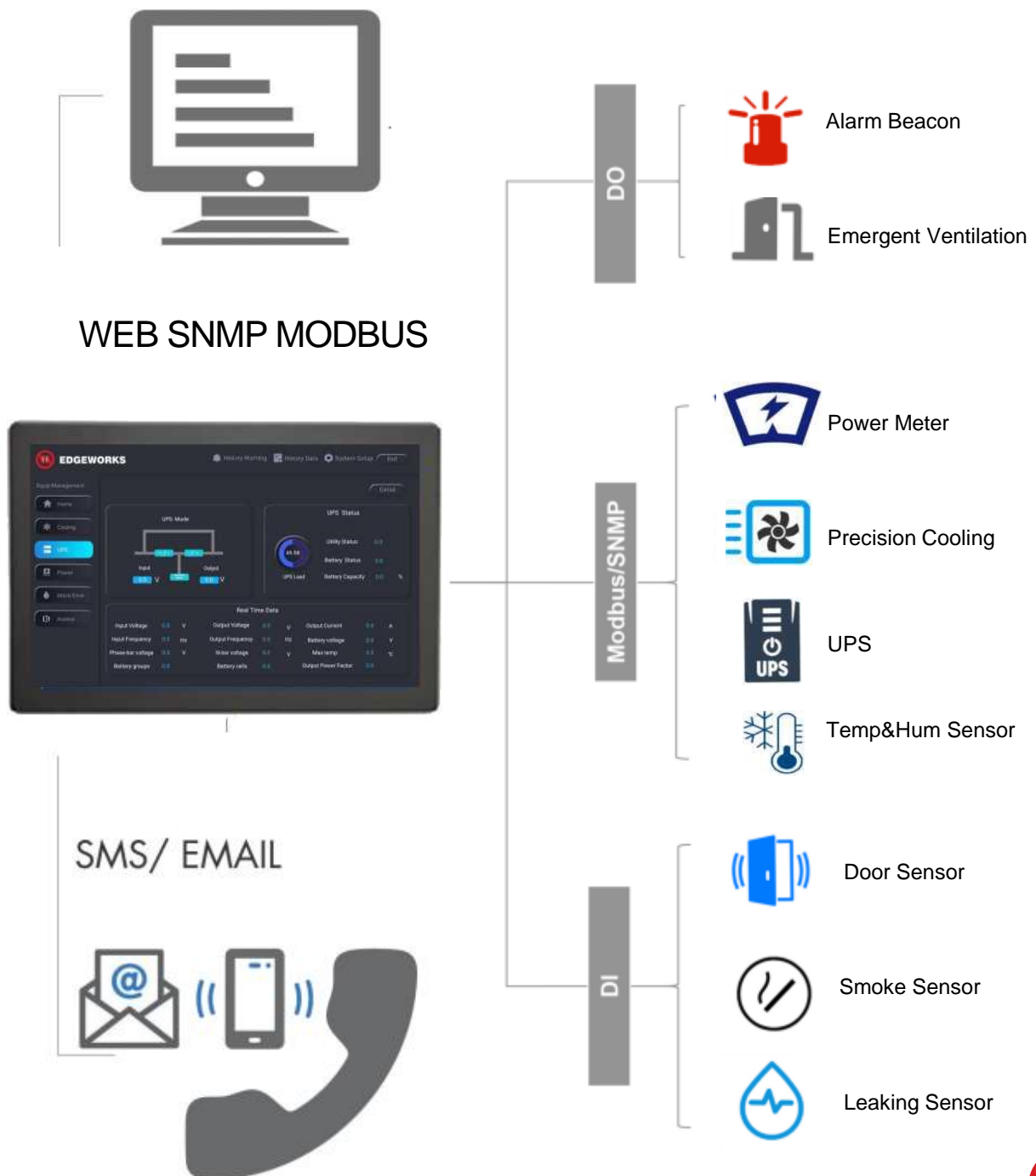
Edge Monitoring solution adopts the all in one monitoring host with built in communication ports, display panel, and management software.



Edge Monitoring



Edge Monitoring Host communicates and manages all the key elements within the edge data center solution, and is accessible to users through web portal and SMS alarms.



Edge Monitoring - Host



Rack/Wall Mount, Monitoring Host w/o Display

EM099



Key Features:

- All in one design 1U height supporting all types of equipment, such as meter, UPS, cooling, door, temp&hum, smoke, leaking sensors, etc.
- Supports multiple protocols type from equipment, such as Modbus-RTU, Modbus-TCP, SNMP.
- Open to integrate any third party critical systems, such as UPS, Genset, Cooling, etc.
- Built in HDMI port to connect with external display.
- Open to be integrated into central BMS by SNMP or Modbus-TCP.

Edge Monitoring - Host



EM099 Monitoring Host



Monitoring Host - EM099

Power Input

12VDC-24VDC, 3.0Amps

Display Panel

External HDMI display

Web Portal

Built in

Monitoring ports for BMS

Modbus-TCP, SNMP

IO Ports

RS232 1* RS232

RS485 5* RS485

DI 6* DI

DO 2*DO

Network 1* 10/100M

Camera -

USB 2* USB2.0

Edge Monitoring - Host



EM100 Monitoring Host



Monitoring Host - EM100

Power Input

12VDC-24VDC, 3.0Amps

Display Panel

Built in 10.1 color display, capacitive type, multiple touch supported

Web Portal

Built in

Monitoring ports for BMS

Modbus-TCP, SNMP

IO Ports

RS232	1* RS232
RS485	5* RS485
DI	6* DI
DO	2* DO
Network	1* 10/100M
Camera	1* 2.0M Pixels
USB	2* USB2.0

Edge Monitoring - Sensors



Temperature & Humidity Sensor

Power Input

10VDC-15VDC

Characteristics

Dimension 80*48*23mm

Communication Modbus RTU

Port RS485

Mount Magnetic

Precision $<\pm 0.3^{\circ}\text{C}$, $<\pm 0.3\% \text{RH}$



Smoke Sensor

Power Input

12VDC-24VDC

Characteristics

Dimension 75x52x39mm

Communication Dry Contact

Port Terminals

Mount Magnetic

Alarm Red Light On



Leaking Sensor

Power Input

9VDC-15VDC

Characteristics

Dimension 88*37*59mm

Communication Dry Contact

Port Terminals

Mount DIN Rail

Responsive Time $<3\text{s}$